

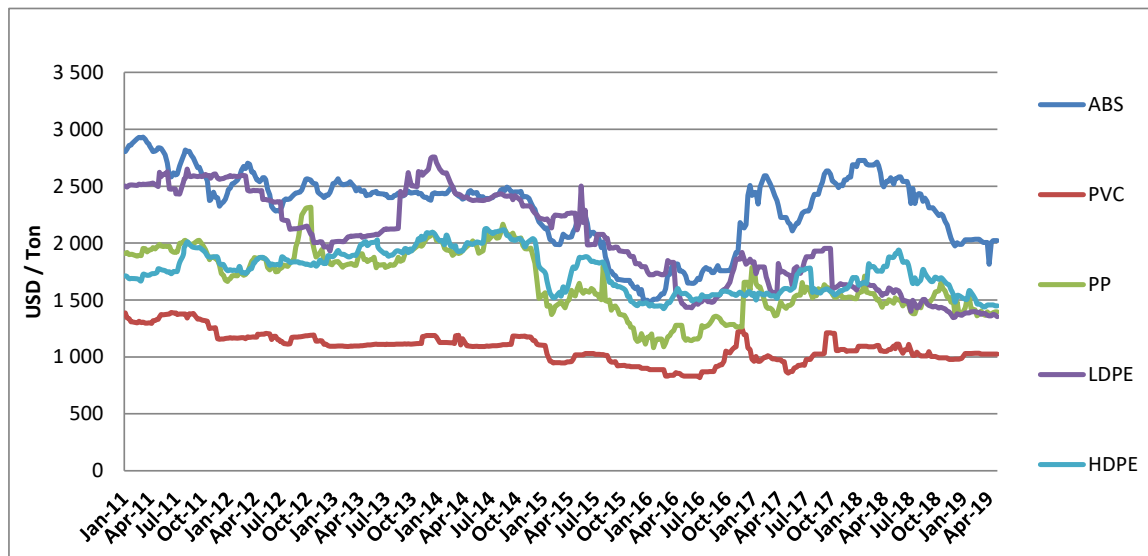
## RAW MATERIAL

May-19

### Monthly plastic prices change for the past 6 months USD/ton

	ABS	PVC	PP	LDPE	HDPE
Nov-18	2 076	982	1 509	1 379	1 604
Dec-18	1 989	982	1 401	1 366	1 520
Jan-19	2 029	1 029	1 471	1 389	1 540
Feb-19	2 034	1 032	1 384	1 394	1 481
Mar-19	2 009	1 025	1 385	1 376	1 448
Apr-19	1 977	1 025	1 387	1 363	1 453
<b>Average on the last 6 months</b>	<b>2019,00</b>	<b>1012,50</b>	<b>1422,83</b>	<b>1377,83</b>	<b>1507,67</b>

### Plastic price change 2011-2018



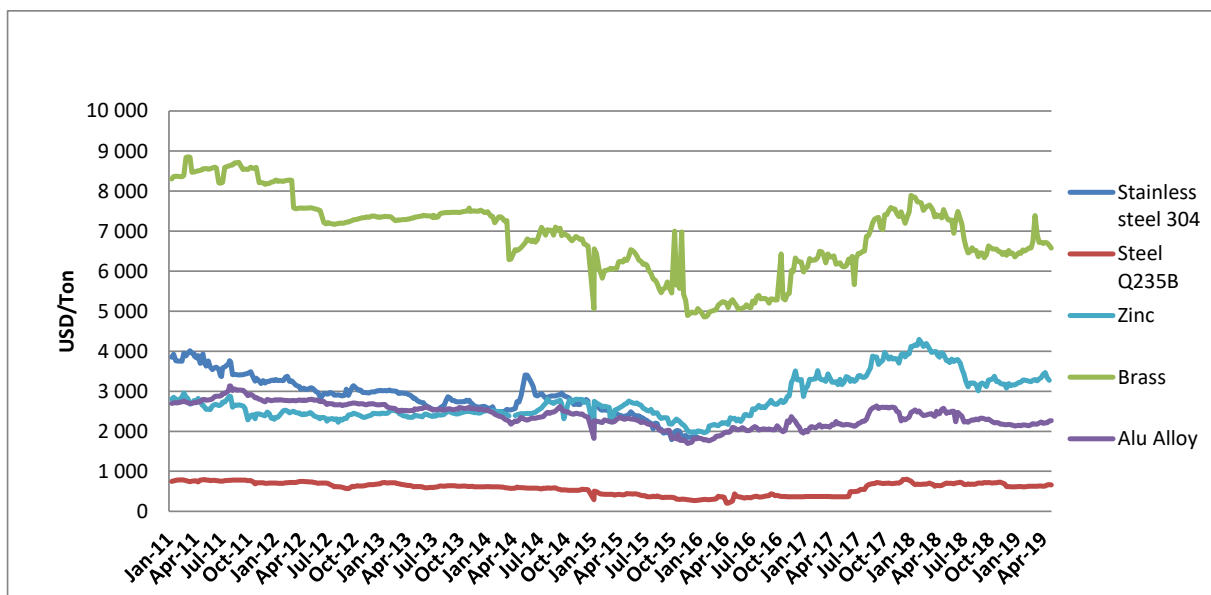
**Remark: the price varies much within one month, but the average values of each month on above table was little falling this month for most of materials**

## RAW MATERIAL

### Monthly metal prices change for the past 6 months USD/ton

	Stainless steel 304	Steel Q235	Brass	Alu Alloy	Zinc
Nov-18		685	6 441	2 173	3 157
Dec-18		615	6 443	2 155	3 163
Jan-19		617	6 485	2 151	3 250
Feb-19		626	6 626	2 165	3 255
Mar-19		629	6 939	2 200	3 298
Apr-19		650	6 666	2 229	3 349
<b>Average on the past 6 months</b>		<b>637,00</b>	<b>6600,00</b>	<b>2178,83</b>	<b>3245,33</b>

### Metal price change 2011-2018



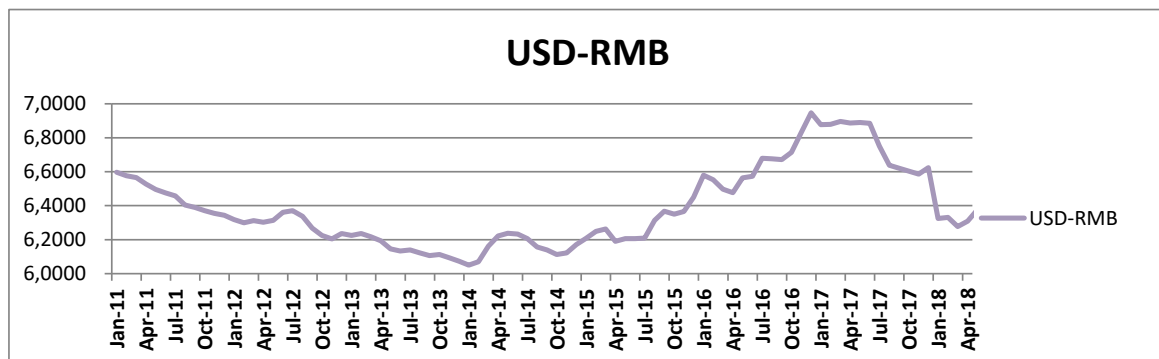
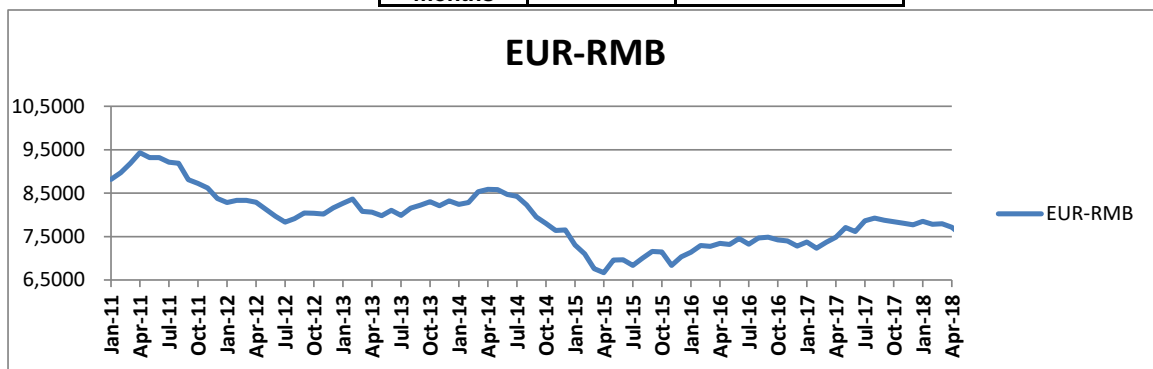
**Remark: the price varies much within one month, but the average values of each month on above table are rising in recent five months for most of materials**

## EXCHANGE RATE

Monthly Exchange change for the past 6 months USD/RMB, Euro/RMB

	EUR	USD
Nov-18	7,8534	6,9500
Dec-18	7,8280	6,8894
Jan-19	7,6981	6,7025
Feb-19	7,6168	6,6857
Mar-19	7,5420	6,7335
Apr-19	7,5256	6,7286
Average on the last 6 months	7,6773	6,7816

=



Remark: The above Exchange Rates were modified and updated from this month, which come from data base of web site: [www.x-rates.com](http://www.x-rates.com)

## SHANGHAI CONTAINERIZED FREIGHT INDEX

